

ELEMENTS BLOCKSTRIPES



BLOCK
STRIPES

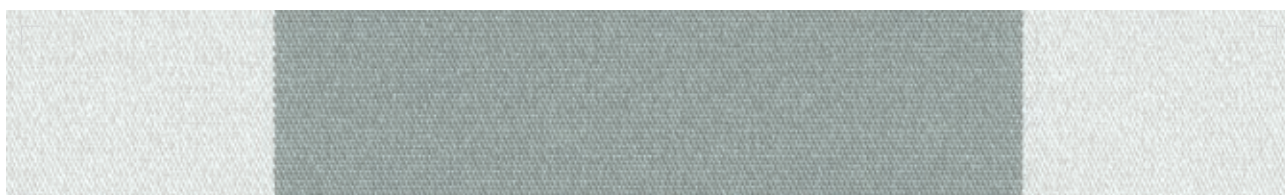


315 ELEMENTS BLOCKSTRIPES



315 222 RAPID

20 cm



315 170 SHIFT

20 cm



315 082 LATITUDE

20 cm



315 814 ALTITUDE

20 cm

SPECIAL FEATURES



PVC frei / PVC-free / Sans PVC / PVC-vrij / senza PVC



Wasser- und schmutzabweisend / Water and dirt repellent /
Hydrofuge et anti-salissures / Water- en vuilafstotend /
Idrorepellente e antisporco

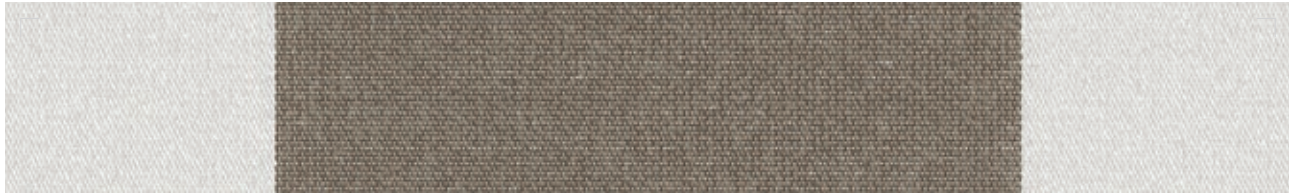


Lichtbeständig / Fade resistant / Résistant à la décoloration /
Bestand tegen vervagen / Resistente allo sbiadimento



315 352 DOWNTOWN GREY

20 cm 



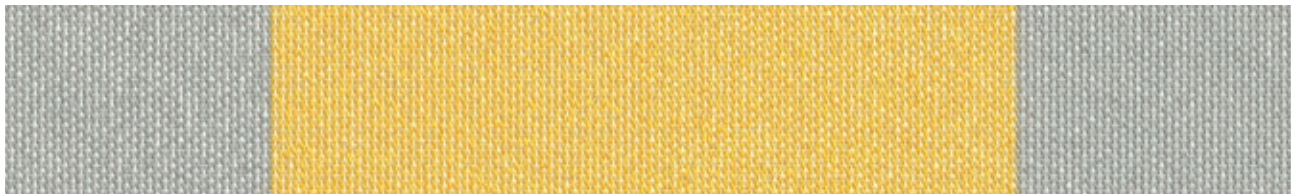
315 711 BOARDWALK

20 cm 



315 052 SUNNY

20 cm 



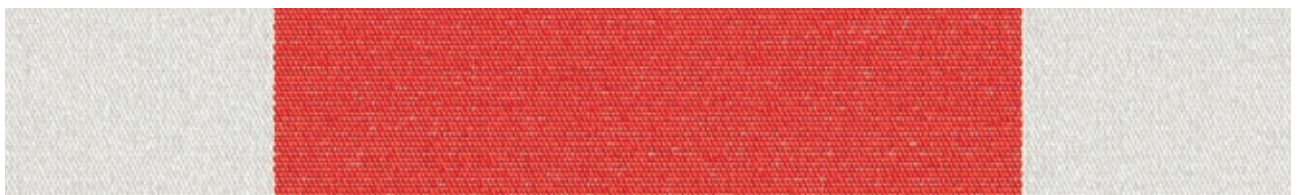
315 347 SPARK

20 cm 



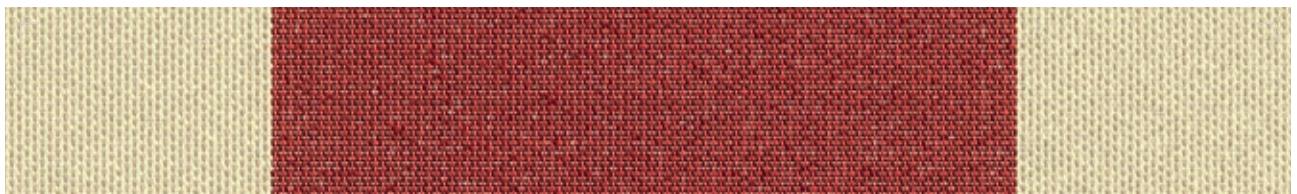
315 267 HONEY

20 cm 



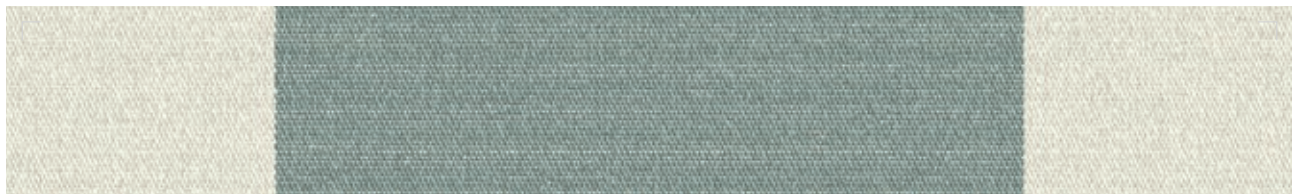
315 167 DAHLIA

20 cm 



315 550 ROSEWOOD

20 cm 



315 621 SURF

20 cm 




315 423 PARADISE

20 cm 




315 420 FOREVER GREEN

20 cm 



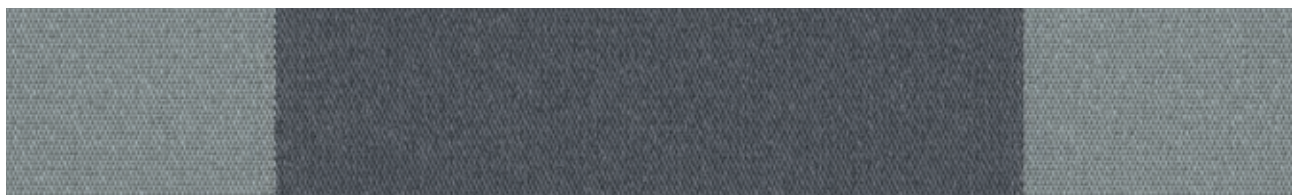
315 422 BOATHOUSE

20 cm 



315 525 MARITIME

20 cm 




315 404 ECLIPSE

20 cm 



315 105 CHECKER BOARD

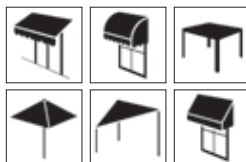
20 cm 














FACTS

315 ELEMENTS BLOCKSTRIPES

Anwendungen / Applications / Applications /
Toepassingen / Applicazione



	100 % PAN	DIN 60 001
	290 g/m ²	DIN EN 12127
	Note: 100	EN ISO 4920
	370 mm	DIN EN ISO 811
	L 1/1	DIN ISO 9354
	145 daN / 5 cm	DIN EN ISO 13934-1
	100 daN / 5 cm	DIN EN ISO 13934-1
	<input checked="" type="radio"/> min. 7/8 <input type="radio"/> min. 4-5/5	DIN EN ISO 105-B04
	120 cm	
	<input checked="" type="radio"/> min. 7/8	DIN EN ISO 105-B02
	Konformitätserklärung / Declaration of conformity / Déclaration de conformité / Conformiteitsverklaring / Dichiarazione di conformità EN 13561	



REINIGUNG & PFLEGE

Cleaning & Care
Nettoyage & Entretien
Reiniging & Verzorging
Pulizia & Cura



ZEICHENERKLÄRUNG

Explanation of symbols
Explication des symboles
Verklaring van symbolen
Spiegazione dei simboli

Hinweis: Änderungen die dem technischen Fortschritt dienen, behalten wir uns vor. Werte ohne Toleranzangaben sind Nennwerte mit einer Toleranz von ±5%. Die Angaben entsprechen unserem heutigen Kenntnisstand und sollen ohne Rechtsverbindlichkeit informieren. • Note: Subject to change in view of technical upgrades. Values indicated without tolerance levels are nominal values with a tolerance range of ±5%. All data presented here is given to the best of our current knowledge for guidance purposes and is not legally binding. • Remarque: Sous réserve de toute modification dans le cadre d'améliorations techniques. Les valeurs mentionnées sans tolérance sont des valeurs nominales avec une tolérance de ±5%. Les indications correspondent à notre savoir actuel et sont données à titre informatif sans obligation juridique. • Opmerking: wijzigingen voorbehouden in verband met technische upgrades. Waarden aangegeven zonder tolerantieniveaus zijn nominale waarden met een tolerantiebereik van ±5%. Alle gegevens die hier worden gepresenteerd, zijn naar ons beste huidige kennis gegeven voor begeleidingsdoeleinden en zijn niet juridisch bindend. • Avvertenza: Il produttore si riserva di apportare modifiche per il miglioramento tecnico del prodotto. I valori privi di tolleranza sono da intendersi come valori nominali con una tolleranza di ±5%. Tutti i dati corrispondono allo stato attuale delle nostre conoscenze; le informazioni fornite non sono legalmente vincolanti.

