



THE WORLD OF **SATTLER**



JOIN US IN **A JOURNEY**
TO A WORLD OF
DAZZLING VARIETY,
FASCINATING COLORS
AND UNFORGETTABLE
IMPRESSIONS!

WELCOME TO THE WORLD OF SATTLER FABRICS!



CONTENT

QUALITIES	
Overview	04
SPECIAL FEATURES	
Material	06
TEXgard Easy Clean	07
Environment and Energy savings	08
UV-protection	09
Design Selector	10
COLLECTION	
Overview	11
Regional Design	12
Lumera 3D	14
Lumera	16
Elements	22
SPECIALS	
PROJECTS	34



QUALITIES

THE THREE BEST ANSWERS TO QUALITY RELATED QUESTIONS.

Sattler exclusively uses solution-dyed premium acrylic for its awning fabrics. This insures your patio will remain protected and cool for many years, provided the awning is properly installed and maintained.

100 % PREMIUM ACRYLIC IS BUILT INTO **EVERY** SATTLER QUALITY

ELEMENTS

LUMERA

LUMERA 3D



100 % ACRYLIC
STAPLE FIBER



QUALITY
ELEMENTS

AWNINGS FROM SOLUTION-DYED BRANDED ACRYLIC ENSURE **QUALITY IN EVERY FIBER.**

Solution-dyed means that the pigment is already added to the yarn during the manufacturing process. Therefore „bleaching“ is never an issue for Sattler fabrics. And since ACRYLIC yarn is resistant to UV without having to add any chemical substances, your awning will last for many years and maintain its stability! Moreover, with TEXgard, Sattler's exclusive finish, water pearls off the surface and dirt does not adhere to it. This finish acts as a protection shield on the fabric.

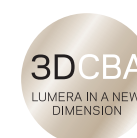
In our ELEMENTS range, **textured acrylic yarns** are woven together. This creates a unique textile character.

INNOVATION MADE BY SATTLER – **THE PALPABLE DIFFERENT AWNING FABRIC.**

We were the first to introduce a compact awning weave into the market with a structure which is perceptible by touch. For the fabrics of our LUMERA 3D line we do not only use the **brilliant CBA yarn** in the weft – as in LUMERA – but additionally combine it with the **textured staple yarn** in the warp. This results in unique haptics and visual appearance:

- Remarkable tactile structures
- Impressive effects due to the special light action
- Improved dirt and water repellency properties

Dessins out of this quality can be recognized by this button:



CBA

QUALITY
LUMERA

66 % ACRYLIC
STAPLE FIBER

33 % CBA

AWNING FABRICS FROM CBA YARN – **A REAL HIGH-TEX PRODUCT.**

We have managed to make awning fabrics more brilliant by using a **smooth and bright** acrylic yarn:

CBA = Clean Brilliant Acrylic. What does this actually mean for the awning fabrics of our LUMERA quality?

- The use of this yarn results in a smoother and denser surface, which improves the self-cleaning effect.
- Colors shine even more intensive and clear.
- The textile character remains the same.

Lumera is unique – These awning fabrics are only available at Sattler! When choosing your fabrics, check for the **CBA-button!**



CBA

QUALITY
LUMERA 3D

33 % ACRYLIC
STAPLE FIBER

66 % CBA



MATERIAL

100 %
PREMIUM
ACRYLIC

CBA

SATTLER OFFERS PREMIUM QUALITY IN **EVERY FIBER.**

HIGH-TEX IS NOT ONLY A PROMISE,
BUT A FACT THAT CAN BE SENSED IN
EVERY METER OF OUR FABRICS.

Our premium awning fabrics are made from 100 %
solution-dyed branded acrylic. This guarantees top-level
functionality, outstanding UV protection and an amazing
textile feel. Colors resist fading, and fabrics will not break
down even after years of exposure to the sun.

Moreover, in our Lumera and Lumera 3D qualities, we use
CBA-yarn; a fiber exclusively developed for Sattler. 'Clean
Brilliant **A**crylic' stands for a smooth, brilliant acrylic yarn,
which makes it easier to remove dirt and water and makes
colors shine brighter.

COLOR: THE
DIFFERENCE LIES
BENEATH THE SURFACE.

Sattler qualities:

Solution-dyed acrylic

Color pigments are infused
all the way to the core of
the fiber.



Other qualities

Yarn-dyed fiber

Pigments penetrate just the outer
surface of the fabric; thus these
fabrics fade over time.



YOUR BENEFITS:

- Colors remain bright and luminous for many years
- High UV fastness protecting the colors from fading as well as fabric degradation.
- Outstanding water, dirt and fungus repellency
- Best weather-proof outdoor fiber

TEXGARD finish

TEXGARD
easy CLEAN

THE SPECIAL ANTI-AGING PROGRAM FOR **LASTING BEAUTY.**

TEXGARD EASY CLEAN: HIGH QUALITY
AND LONG LASTING PROTECTION FOR
YOUR AWNING FABRIC.

At Sattler, every single fiber is carefully covered with a pro-
tective coating. Our proprietary impregnation prevents the
permeation by water, humidity and dirt, thus supporting
the self-cleaning effect. Dirt pearls roll down the surface
like water drops on leaves.

TEXTILES BY SATTLER DISTINGUISH
THEMSELVES THROUGH:

- An outstanding dirt and fungus-repellence
- High water repellence
- Very good rolling behavior
- Excelent textile feeling
- Brilliant and durable colors

OUR FABRICS AS
ROLE MODEL.

Sense of responsibility is what counts. Therefore, certifica-
tion according to international quality management system
standards such as ISO 9001 and ÖKO-TEX® standard 100
are a must to us. The development and manufacturing of
our awning fabrics are in compliance with all established
standards required to ensure the quality of our products.
Furthermore, our products fulfill all requirements of the
REACH regulation, which means that all chemicals we use
meet the most demanding criteria of the European Union.

OPTIMUM CLEANING:

Prolong the life of your awning by cleaning it properly with a
soft brush, a mild soap solution and some water. Do not roll
up your awning when wet. By following these instructions
you will enjoy your Sattler awning for many years.

ENVIRONMENTAL & ENERGY



THESE SHADES BLEND WITH THE **ENVIRONMENT.**

FOR SATTLER, **ENVIRONMENTAL PROTECTION** IS A PRINCIPLE WE FOLLOW EVERY DAY.

The certification according to the ISO 14001 environmental management system norm is a voluntary commitment made by Sattler aimed at achieving a balance between ecological and economic objectives.

The continuous development of our environmental awareness is an integral component of our joint responsibility. Therefore, we supervise and optimize the environmental impact of our manufacturing process.

This is how we contribute towards leaving a healthy planet for future generations.

SOME OF THE ACTIONS WE TAKE:

- Production of our awning fabrics uses only clean energy (CO² neutral)
- We use our own capacitors and compressors to heat our facilities
- We optimize our washing and impregnation processes in terms of energy consumption

PREMIUM SHADES WITH **ENERGY SAVINGS EFFECT.**

All our designs are measured according to the amount of heat and light energy that passes through the fabric. Awning fabrics filter at least 70 % of the heat gain. This shows that awnings substantially contribute to saving energy reducing the need for air conditioning.

UV PROTECTION



IT IS ALL ABOUT DESIGN AND **PROTECTION** FOR YOUR SKIN.

SATTLER FABRICS REDUCE **UV PENETRATION BY UP TO 99 %.**

What many of us ignore: we are also exposed to UV rays, which are harmful to our skin, even in the shade. This is why it is particularly important for Sattler that our fabrics undergo the most rigorous tests.

Our fabrics are tested according to the **UV Standard 801**. This testing method does not only consider the fabric when new, but also how the fabric behaves **under different weather conditions**. This means the fabrics are exposed to extreme conditions (e. g. extreme exposure to the sun and weather). This helps to determine if the fabric keeps its durability promise over the years.

This is the only way to ensure that the fabric you choose will meet your demands.

How much protection do we offer?

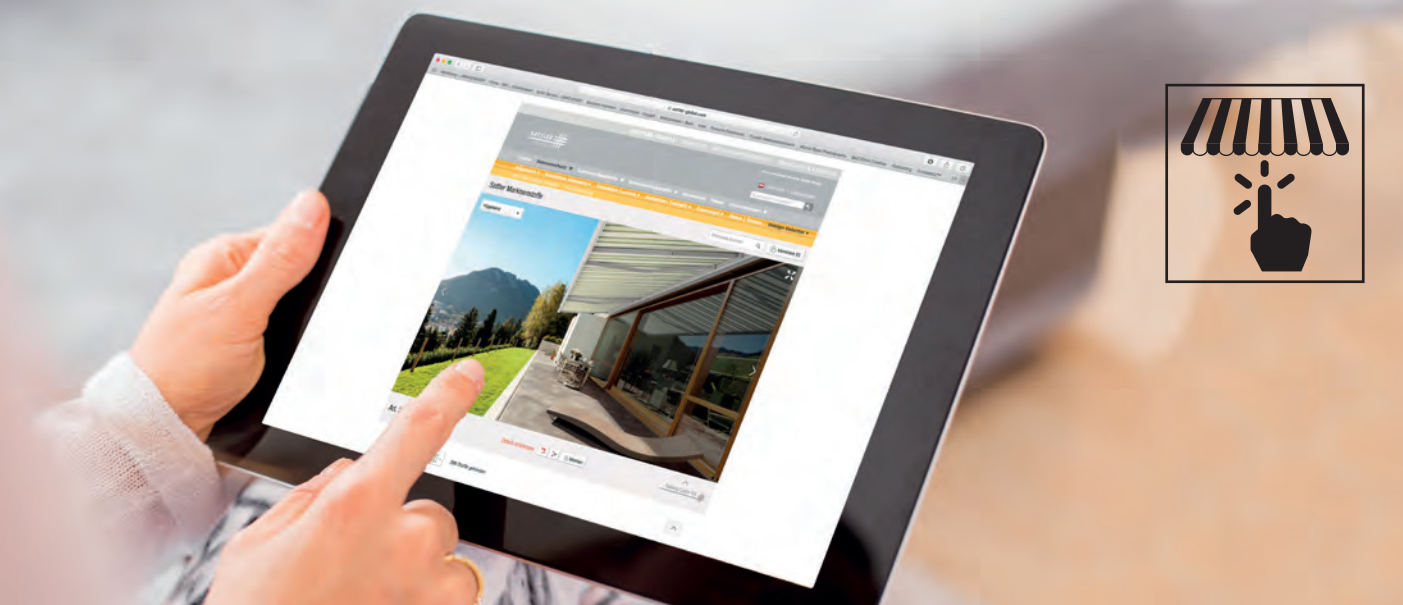
UV 80 = Blocks 98,75 % of UV radiation

UV 40 = Blocks 97.5 % of UV radiation

UV PROTECTION IN COMPARISON	UV- or sun protection factor
Light cotton clothes (according to UV Standard 801)	aprox. 2 - 10
Sunscreen when used properly (SPF)	0 - 30
Shadow under a tree	aprox. 5 - 15
Shadow under a parasol (without spec. UV-protection)	aprox. 2 - 15
Sattler sun protection textiles	40 - 80

The indicated UV-protection factor is guaranteed in accordance to the most demanding measurement procedures worldwide: simulation of real situations under extrem weather conditions, such as the simulation of the intensity of the Australian sun. Source: Hohenstein Institute.

DESIGN SELECTOR




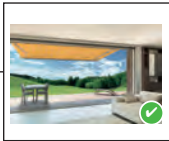


WE DELIVER THE BEST QUALITY AND THE BEST DECISION MAKING TOOL.

"SATTLER DESIGN-SELECTOR" HELPS YOU TO MAKE A **FAST AND CONVENIENT** PRE-SELECTION OF YOUR FAVORITE DESIGNS.

To optimize the selection of your awning fabrics, you can choose among different outdoor scenes and see them already installed. This will let you see how the awning will look with the fabric you have selected. Once you have made your decision, you can use the on line tool to print out the selection information to share with your dealer/retailer.

With just four simple steps, you can relax, enjoy, compare, select and send your enquiry.

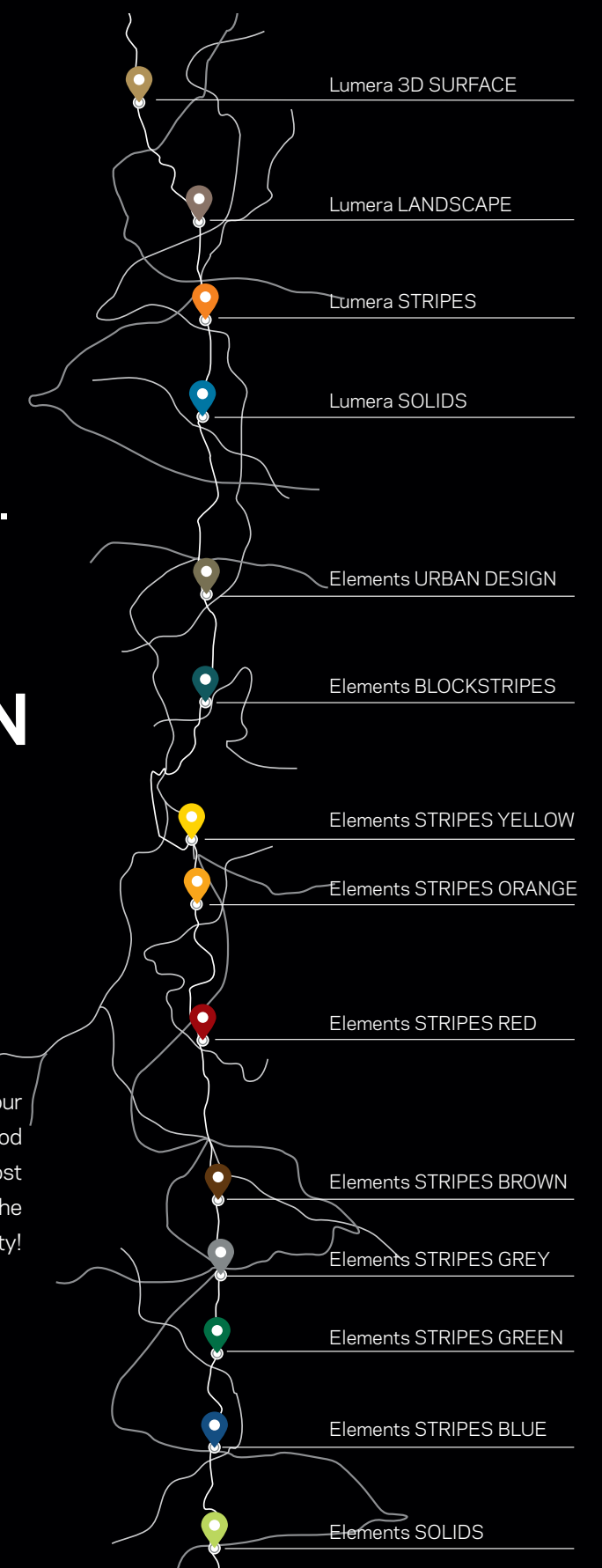
www.world-of-sattler.com → Design selector

- 1  Filter according to color, collection or sample. Choose favorite fabric.
- 2  Choose an outdoor scene, and view your selection on the awning.
- 3  Print the technical data sheet of the selected articles...
- 4  ... or save as a PDF to email directly to your dealer.

THE WORLD OF SATTLER. OVERVIEW OF THE COLLECTION

WE ARE SURROUNDED BY LIGHT AND COLOR; BOTH HAVE AN IMPACT ON OUR **LIFE AND WELL-BEING.**

Bring the World of Sattler Fabrics to your home and create your very own "feel-good atmosphere". Join us in a journey to the most inspiring spots on earth and choose the most beautiful designs in premium quality!



REGIONAL DESIGN

WE THINK GLOBALLY
AND ACT **LOCALLY**
IN THE FULL SENSE OF
THE WORDS.



1

Landscape moods



2

Region specific
color resonances define the basic colors.

»SHADOWS FROM
MY REGION«

AWNINGS DESIGNS BY
SATTLER ARE **SNAPSHOTS
OF OUR WORLD.**

The color worlds we perceive in our living spaces are influenced by light, climate, landscape and culture. The color climate of a region is decisive for our well-being. Sattler reproduces these living spaces in their designs and takes them particularly into consideration when creating the country collections, which focuses on the needs of our consumers.

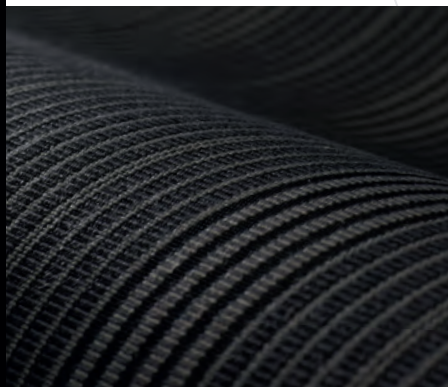
Created in collaboration with Dr. Leonhard Oberascher
(Design- and color psychologist)



3

Our desings emerge
out of this.



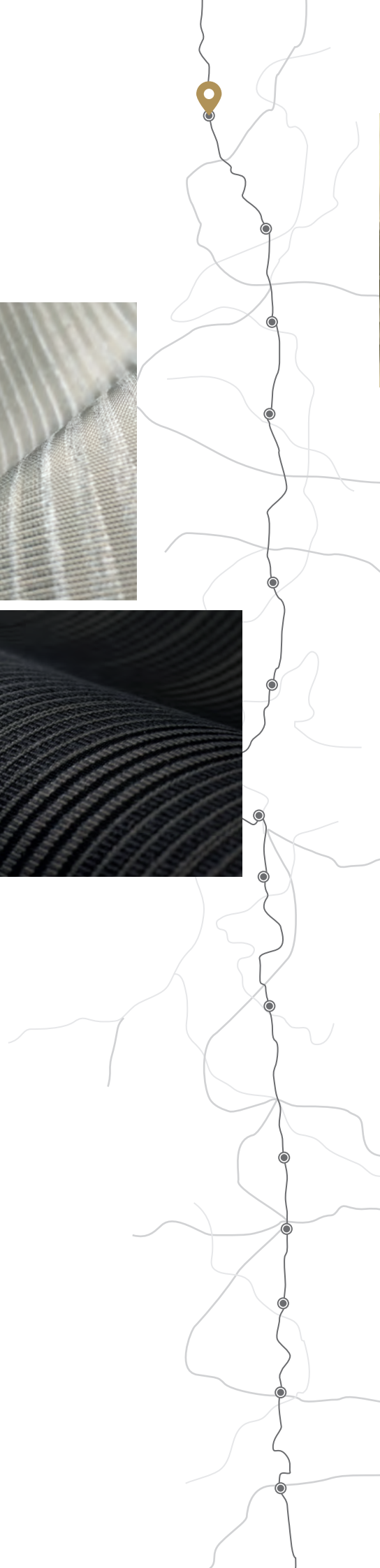


CBA

QUALITY LUMERA 3D

NATURE PROVIDES US WITH
EVERYTHING WE NEED. **ALSO**
WITH IDEAS FOR NEW DESIGNS.

When we spend time under an awning, we are also spending time in the nature and we want to absorb as much of it as possible. The designs of our LUMERA 3D quality make this happen. With these designs you can feel the structures and the textile character as you enjoy the colors that reproduce the surfaces of the countryside and urban areas. By using yarns with different surface properties we are able to create a 3D effect, not only visually but also in terms of haptic qualities.



LUMERA 3D

LUMERA 3D SURFACE

LUMERA 3D **SURFACE** –
FASCINATING STRUCTURES
QUOTIDIAN SURFACES.

With LUMERA 3D SURFACE we immerse into the world of the 3-dimensional Sattler fabrics. Materials, that we are usually not really aware of, acquire a new meaning in the designs of this quality in terms of structure and color.

3DCBA
LUMERA IN A NEW
DIMENSION

📍 SURFACE



385 101 HALIT UV 30



385 110 CHALK UV 40



385 201 BRASS UV 80



385 210 BRONZE UV 80



385 220 WISMUTH UV 80



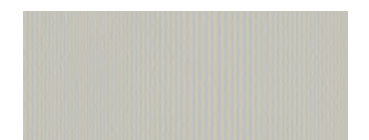
385 301 AURUM UV 80



385 320 WOLFRAM UV 80



385 710 PYRIT UV 80



385 802 ZINC UV 80



385 803 CHROME UV 80



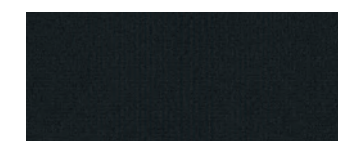
385 810 MARBLE UV 80



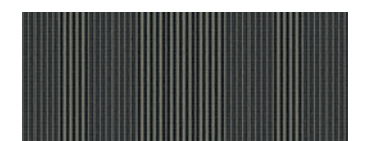
385 811 SILICATE UV 60



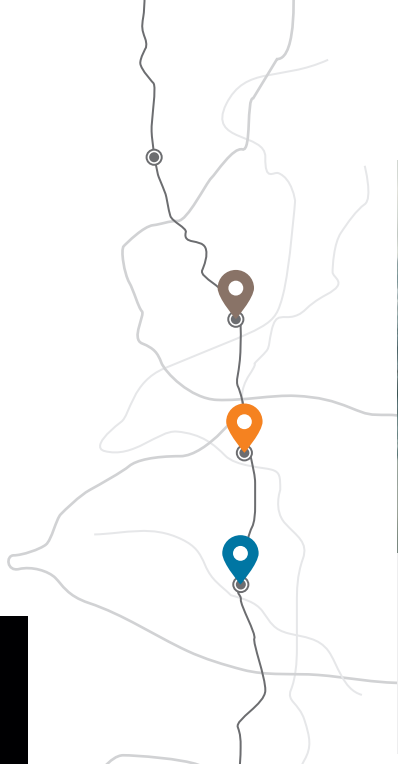
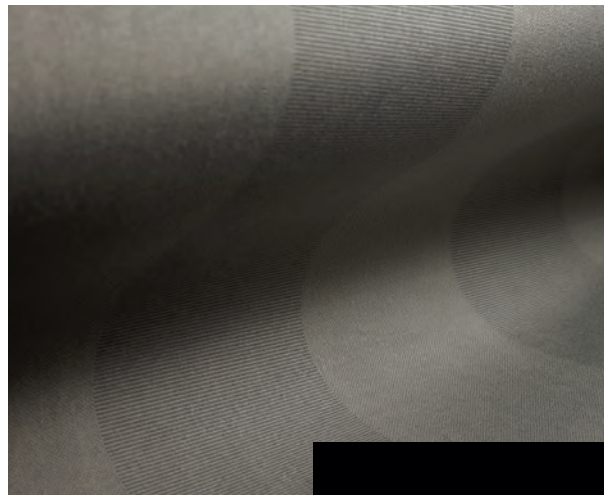
385 820 GRANITE UV 80



385 901 SLATE UV 80



385 910 BASALT UV 80

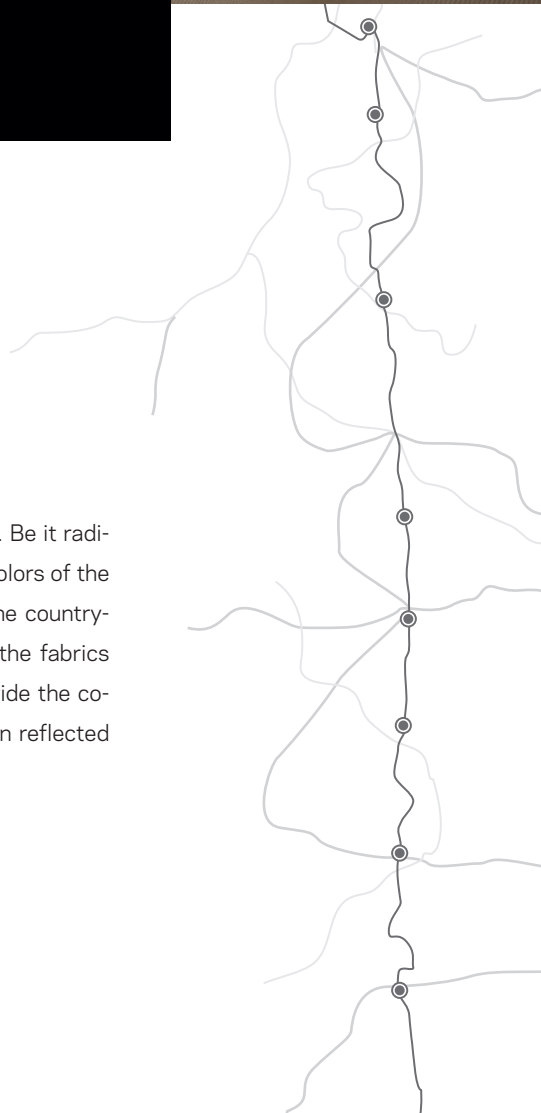


CBA

QUALITY
LUMERA

NO LIGHT, NO COLOR
WITH LUMERA
COLORS SHINE
IN A DIFFERENT LIGHT.

We are surrounded by light day and night. Be it radiant sunshine, moonlight or the manifold colors of the artificial illumination in the cities and in the countryside. The particularly smooth surface of the fabrics that form part of the Lumera quality provide the colors with a special brightness, that is then reflected in the designs.



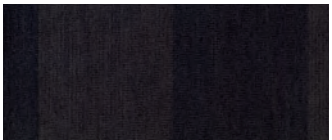
LUMERA

LUMERA LANDSCAPE -
NATURAL, ELEGANT DESIGNS,
THAT SUBTLY ENRICH THE
ARCHITECTURE.

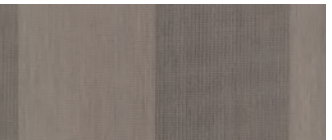
Landscapes with diverse surfaces, varied vegetation influenced by light moods were source of inspiration to these designs. Each awning fabric represents a color hue that interprets different areas in an abstract way.

#CBA
CLEAN BRILLIANT
ACRYLIC

LANDSCAPE



338 640 NAMIB UV 80



338 639 SAHARA UV 80



338 662 BEACH UV 60



338 665 VULCANO UV 80



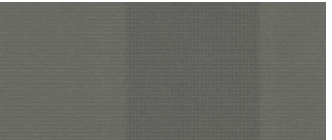
338 643 CLIFFS UV 80



338 656 CHOTT UV 60



338 655 LADAKH UV 80



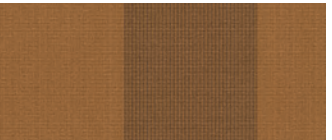
338 644 FJORD UV 80



338 657 ROSOPSIDA UV 80



338 658 GOBI UV 80



338 638 SAVANNAH UV 80



338 667 GOLDEN CROPS UV 80



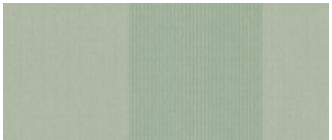
338 660 TAIGA UV 80



338 659 PAZIFIK UV 80



338 641 ARCTIC UV 80



338 642 GREENLAND UV 80

LUMERA

LUMERA LANDSCAPE MINI

LUMERA **LANDSCAPE MINI** – DELICATE STRIPES GIVE THE AWNING A NEW ELEGANT APPEARANCE.

Let's take a closer look to the landscape in our surroundings; we will recognize unique structures that significantly shape the environment. These structures find their analogy in the LANDSCAPE MINI designs, which extend and complement the LANDSCAPE line.



LANDSCAPE MINI



338 620 SAND UV 80



338 627 CLAY UV 80



338 621 GRAVEL UV 80



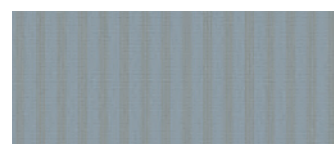
338 623 LAVA UV 80



338 624 CORN UV 80



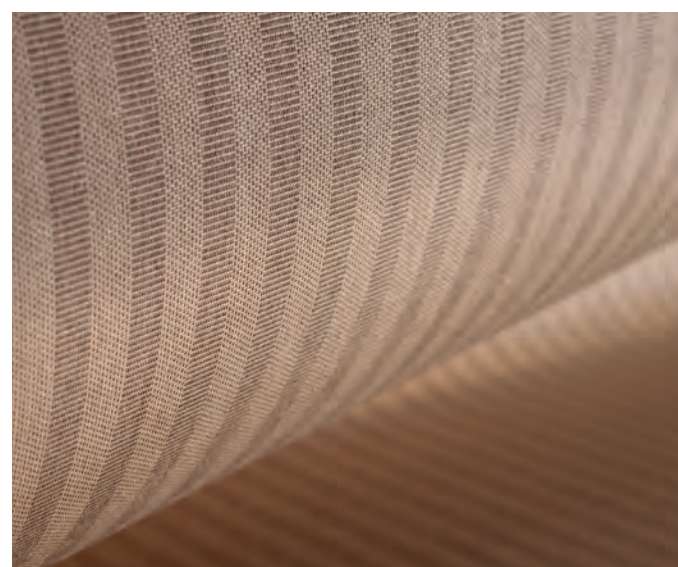
338 622 FOSSIL UV 80



338 626 ICE UV 80



338 625 MOSS UV 80



LUMERA

LUMERA STRIPES

LUMERA **STRIPES** – LUMINANCE IN A CLEAN FORMAT.

What makes LUMERA STRIPES so special? The brightness of the colors, that shine even more intensely due to the CBA-fiber. With their delicate and modern stripes, these designs enrich and complement our LUMERA quality.



STRIPES



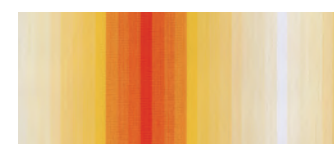
338 201 UV 60



338 203 UV 60



338 207 UV 60



338 301 UV 60



338 321 UV 80



338 421 UV 80



338 605 UV 80



338 612 UV 80



338 702 UV 60



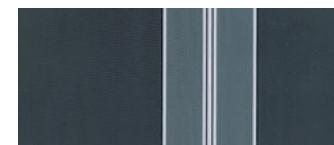
338 721 UV 40



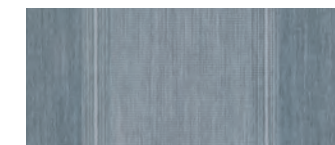
338 722 UV 80



338 723 UV 80



338 801 UV 80



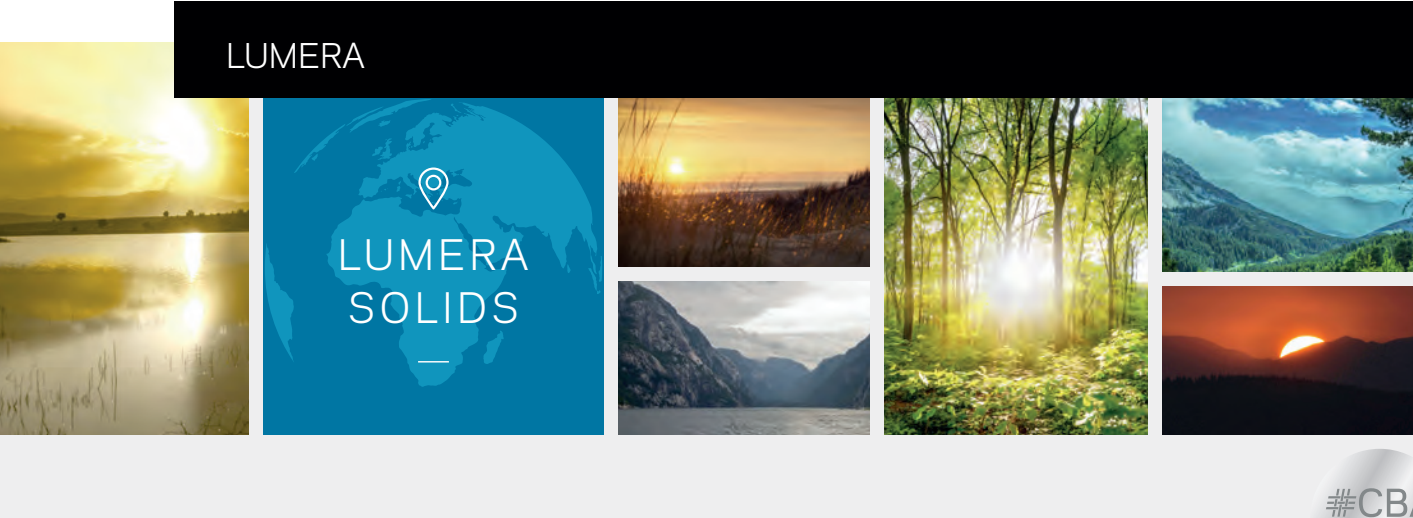
338 802 UV 80



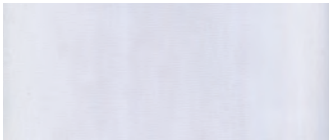
338 803 UV 60



338 805 UV 80



SOLIDS



338 910 CRYSTAL UV 40



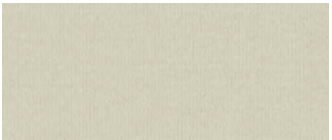
338 144 ALABASTER UV 40



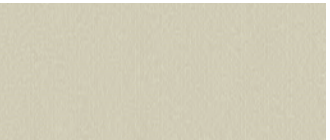
338 033 ARAGONIT UV 80



338 814 COPAL UV 60



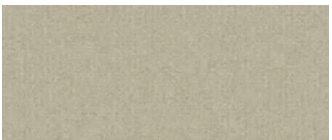
338 710 ALLUNIT UV 60



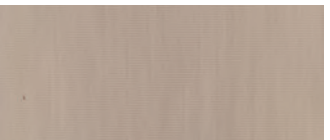
338 711 MAGNESITE UV 80



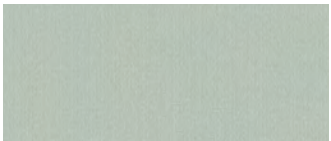
338 811 CHALCEDON UV 80



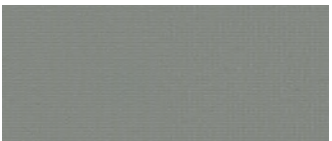
338 712 BARITE UV 80



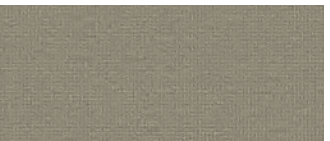
338 020 DOLOMIT UV 80



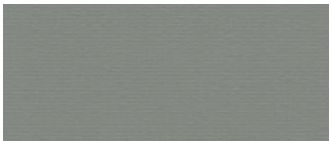
338 136 HEMATITE UV 80



338 813 GALENITE UV 80



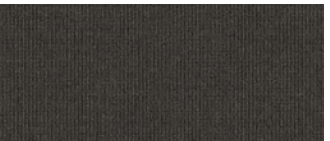
338 713 BRONZIT UV 80



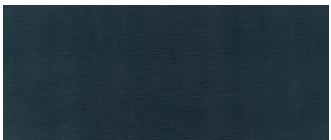
338 812 CALCITE UV 80



338 038 BRASILIANTEW UV 80



338 714 BIODIT UV 80



338 398 SLATE UV 80



338 715 MALTESIT UV 80



338 154 ONYX UV 80



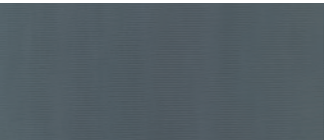
SOLIDS



338 362 EMERALD UV 80



338 507 TOPAZ UV 80



338 810 APATITE UV 80



338 609 NEPHRITE UV 80



338 011 SAPPHIRE UV 80



338 809 SILVER UV 60



338 089 PERIDOT UV 80



338 406 GRANAT UV 80



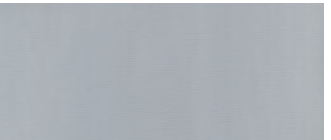
338 028 ACTINOLITE UV 80



338 003 SULPHUR UV 80



338 001 RUBY UV 80



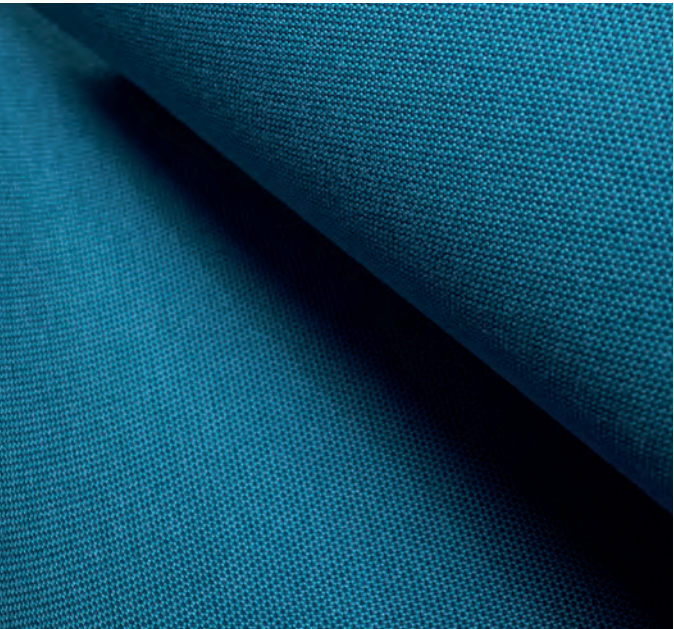
338 808 BERYL UV 80

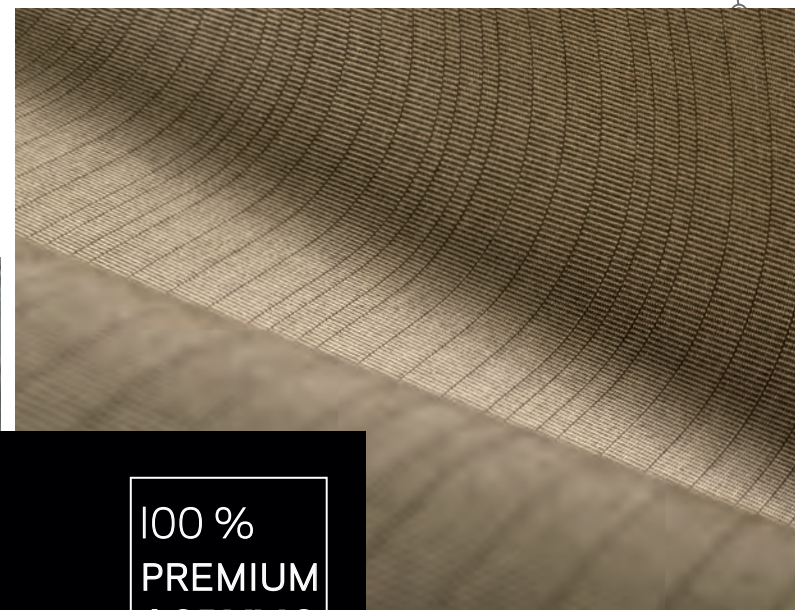
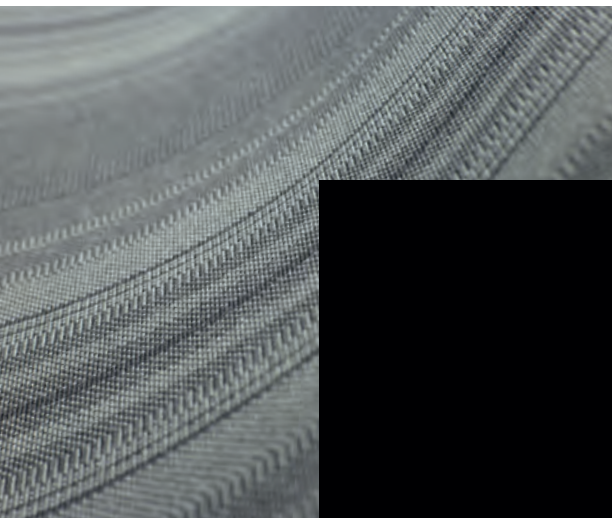


338 305 AMBER UV 80



338 306 TIGEREYE UV 80



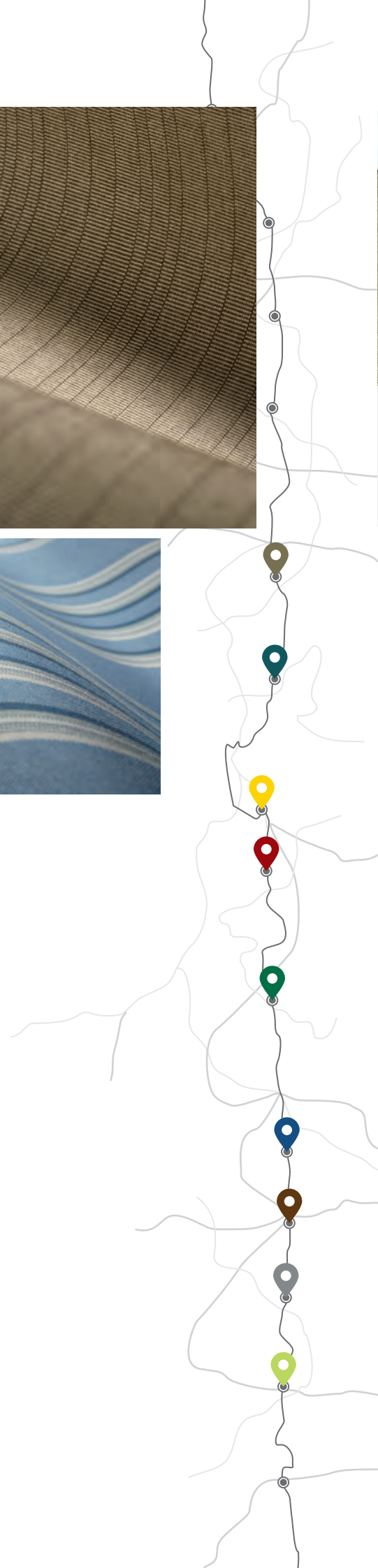


100 %
PREMIUM
ACRYLIC

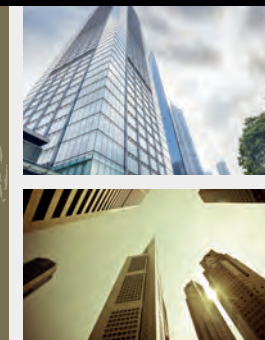
QUALITY ELEMENTS

THE BASIS OF OUR CREATIONS:
**PREMIUM-ACRYLIC FABRICS
IN OUTSTANDING QUALITY AND
TOP DESIGNS.**

Be it in the city, in the countryside or somewhere between both - everybody finds a suitable design in our ELEMENTS quality. We base our knowledge in color studies and know what you need and what suits you well. The modern textures of our Urban line. The design, the modern stripes in the most various color shades and the subtle structured solid fabrics complement and round your awning as they turn it into a piece of jewelry.



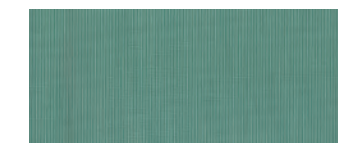
ELEMENTS



ELEMENTS **URBAN DESIGN** –
GO FOR AN URBAN WALK-
THROUGH THIS QUALITY.

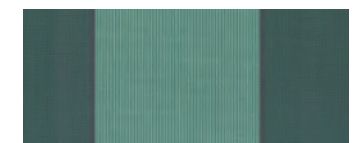
Be it buildings, the sky, green areas or lights – in cities our sight is captured by surfaces in the most various colors and structures, we have captured these surfaces in our designs permanently for you.

URBAN DESIGN Park



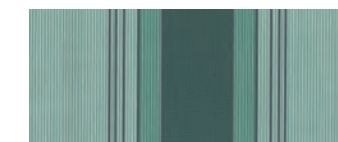
320 928

UV 80



320 956

UV 80



320 976

UV 80

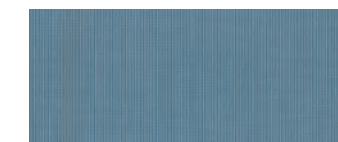


320 992

UV 80

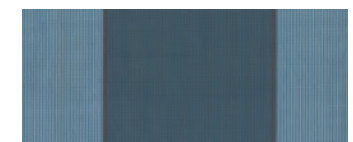
In our surroundings, between buildings, in open spaces, we discover parks in pleasant color compositions.

URBAN DESIGN Sky



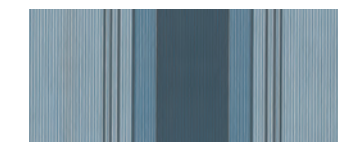
320 926

UV 80



320 955

UV 80



320 975

UV 80

When we look upwards, we perceive the sky with its various shades.

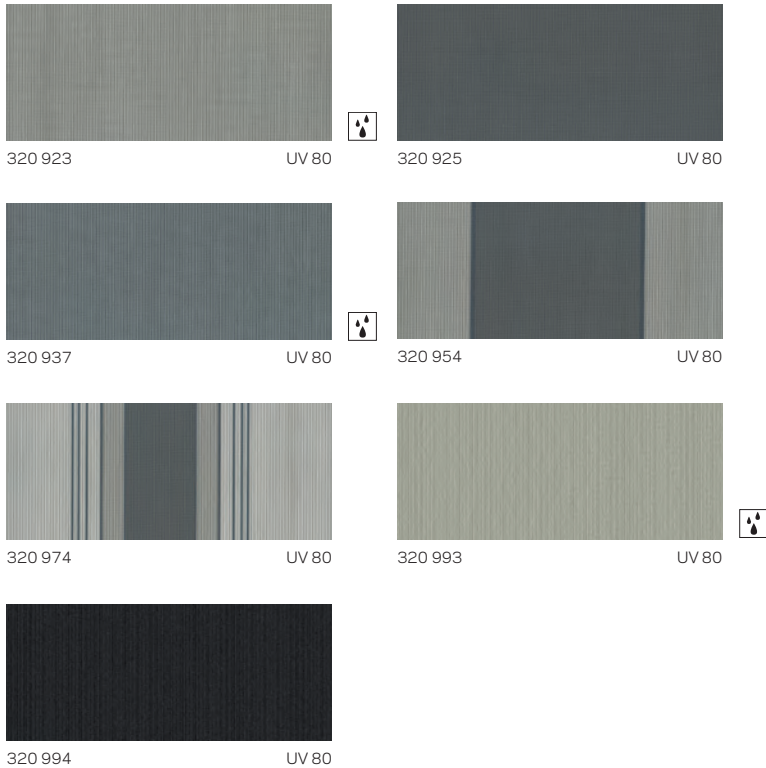
Also available in All Weather 308



URBAN DESIGN Wall



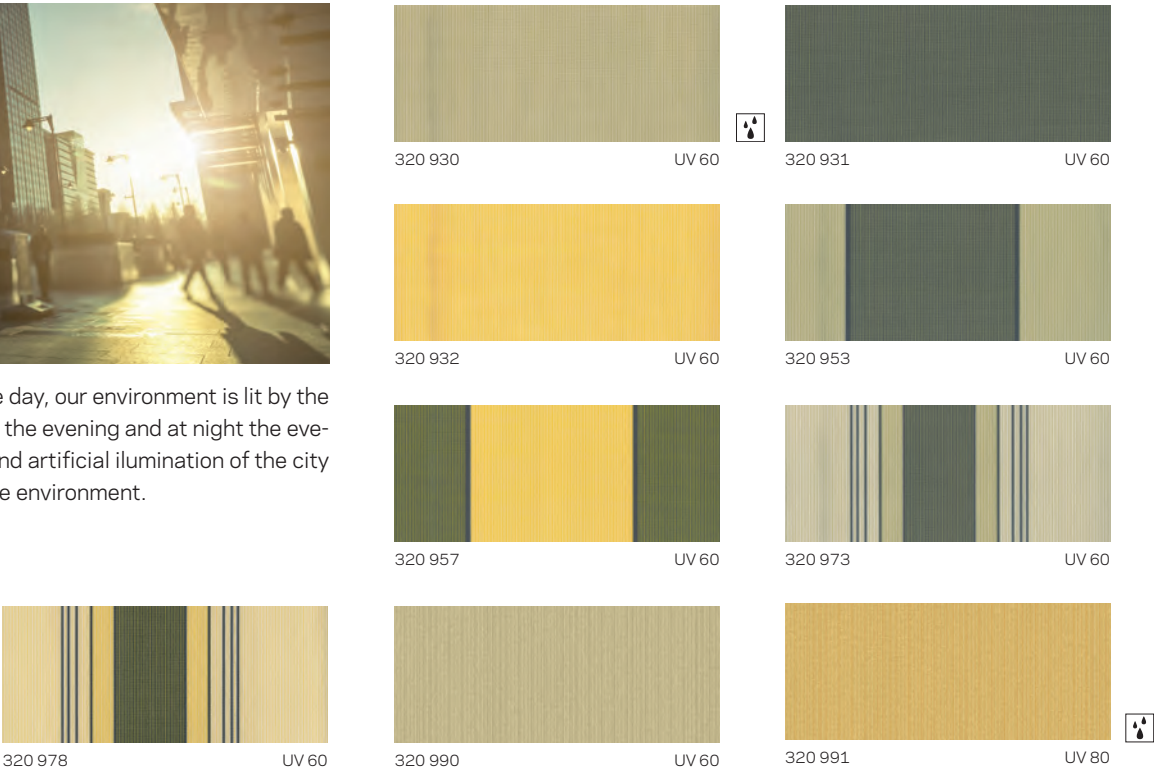
When we look around us within the urban spaces we see walls and building façades with diverse surface compositions.



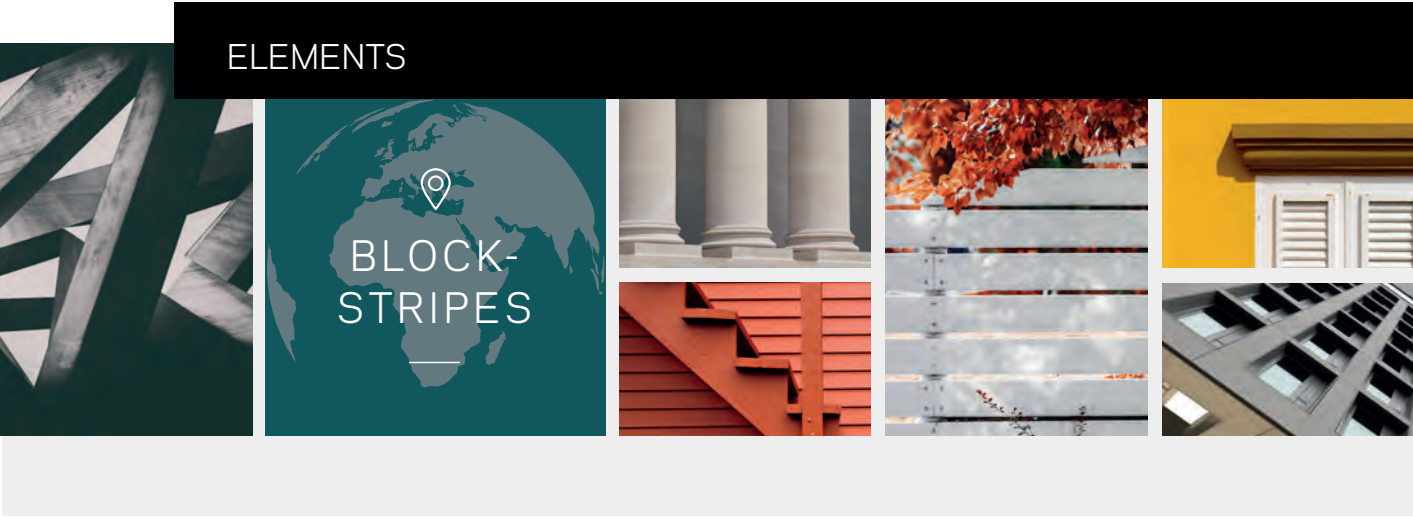
URBAN DESIGN Lights



During the day, our environment is lit by the sun and in the evening and at night the evening sky and artificial illumination of the city light up the environment.



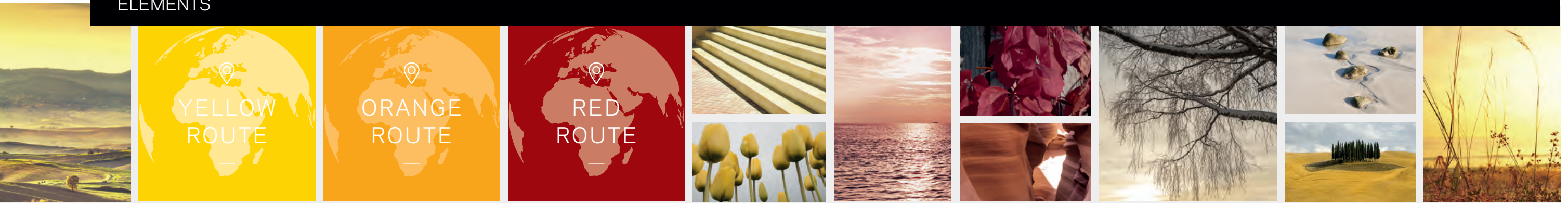
ELEMENTS



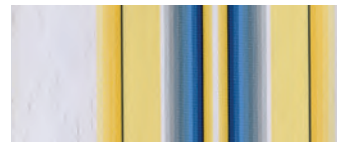
BLOCKSTRIPES



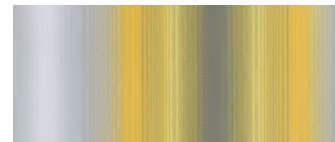
ELEMENTS



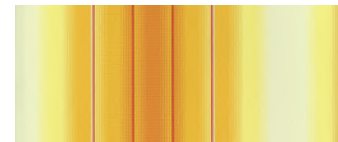
STRIPES Yellow



30A 554 UV 40



30A 774 UV 40



320 183 UV 80



320 212 UV 80



320 227 UV 40



320 249 UV 40



320 251 UV 80



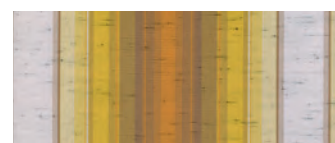
320 254 UV 60



320 255 UV 60



320 452 UV 80



320 679 UV 60



364 053 UV 60

STRIPES Orange



30A 700 UV 80



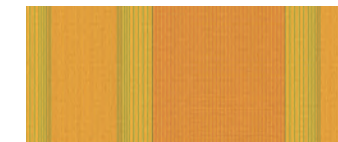
30A 778 UV 80



320 180 UV 80



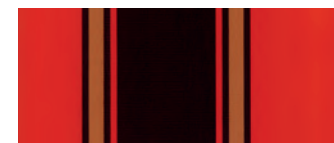
320 305 UV 80



320 330 UV 80



320 381 UV 80

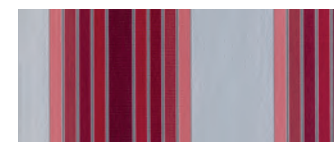


320 678 UV 80



320 692 UV 80

STRIPES Red



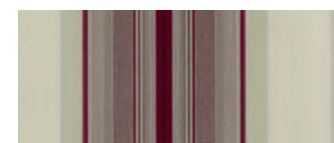
320 118 UV 60



320 186 UV 40



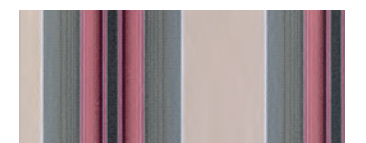
320 309 UV 80



320 408 UV 60

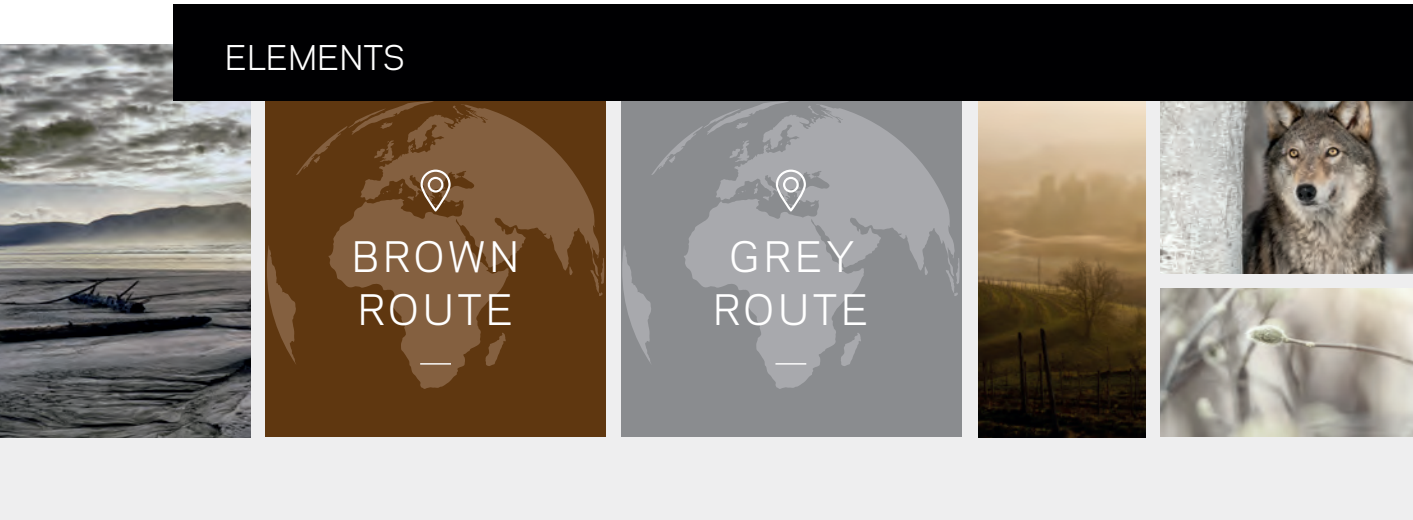


320 434 UV 80



320 833 UV 80

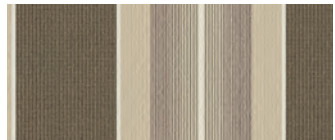




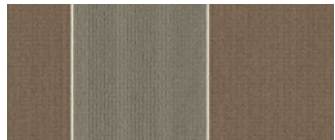
📍 STRIPES Brown



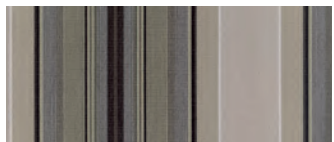
320 707 UV 80



320 710 UV 80

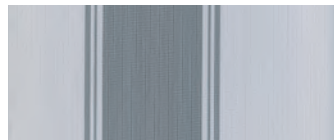


320 711 UV 80



320 715 UV 80

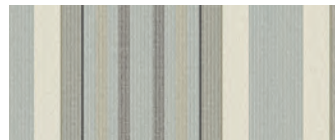
📍 STRIPES Grey



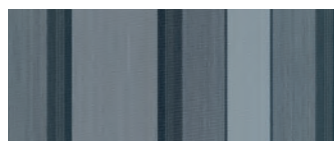
30A 734 UV 40



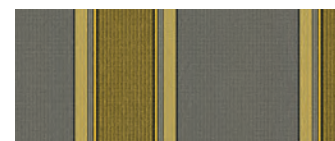
320 812 UV 80



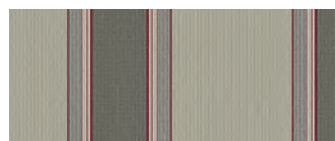
320 820 UV 40



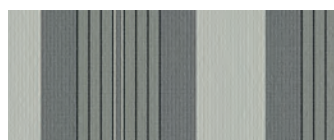
320 826 UV 80



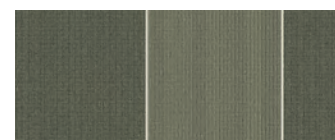
320 836 UV 80



320 838 UV 80



320 839 UV 80



320 846 UV 80



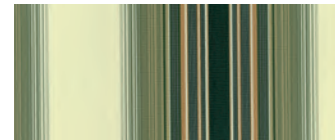
320 848 UV 80



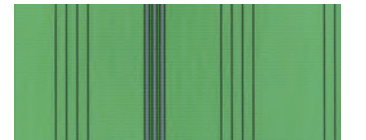
📍 STRIPES Green



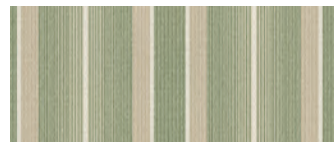
320 B70 UV 40



320 054 UV 60



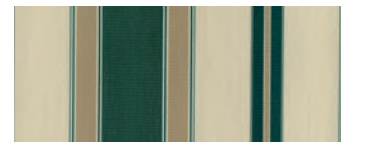
320 627 UV 80



320 671 UV 80



320 672 UV 80



364 598 UV 80

📍 STRIPES Blue



320 190 UV 60



320 234 UV 60



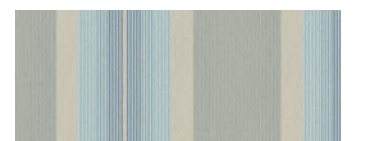
320 235 UV 80



320 556 UV 80



320 566 UV 80

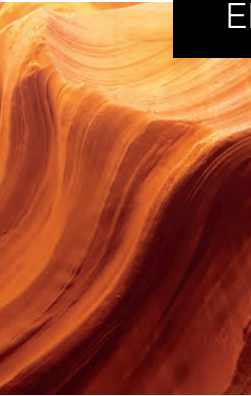


320 573 UV 80








320 574 UV 80

ELEMENTS



ELEMENTS
SOLIDS

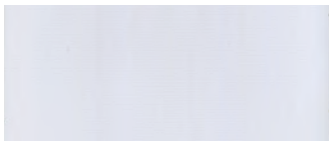










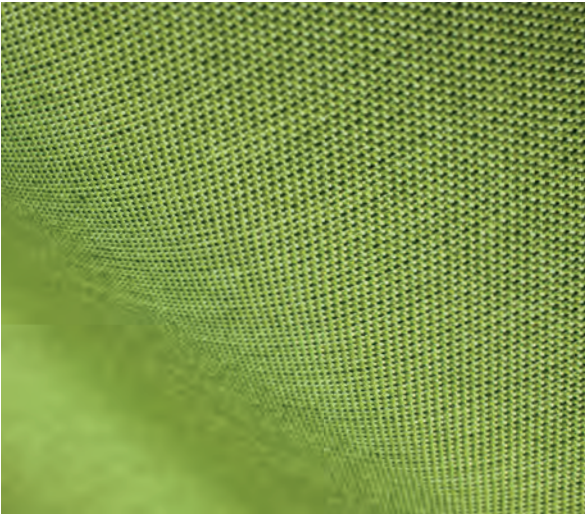
ELEMENTS **SOLIDS** -
SIMPLE MONOCROME TONES
WERE YESTERDAY, TODAY,
STRUCTURES PREVAIL.

But solids are not all the same. Be it mottled tones or colors with delicate accents or with subtle textures, the current color range of our ELEMENTS SOLIDS quality is a creation we can be proud of. For all colors of the nature can be found in our fabrics in the most varied way.



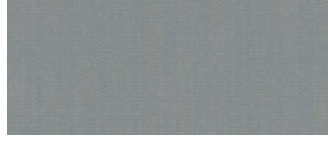
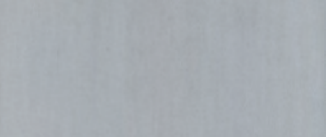















SOLIDS

 <div>314 010 UV 40</div>	 <div>314 018 UV 40</div>	 <div>314 910 UV 40</div>
 <div>314 471 UV 60</div>	 <div>314 580 UV 40</div>	 <div>314 723 UV 40</div>
 <div>314 325 UV 60</div>	 <div>314 830 UV 60</div>	 <div>314 223 UV 60</div>



SOLIDS

 <div>314 344 UV 60</div>	 <div>314 028 UV 80</div>	 <div>314 051 UV 80</div>
 <div>314 030 UV 60</div>	 <div>314 364 UV 80</div>	 <div>314 941 UV 80</div>
 <div>314 006 UV 80</div>	 <div>314 414 UV 80</div>	 <div>314 402 UV 80</div>
 <div>314 011 UV 80</div>	 <div>314 016 UV 80</div>	 <div>314 638 UV 80</div>
 <div>314 546 UV 80</div>	 <div>314 143 UV 80</div>	 <div>314 154 UV 80</div>
 <div>314 153 UV 80</div>	 <div>314 763 UV 80</div>	 <div>314 013 UV 80</div>

SOLIDS

 <div>314 814</div> <div>UV 80</div>	 <div>314 033</div> <div>UV 40</div>	 <div>314 E67</div> <div>UV 60</div>
 <div>314 081</div> <div>UV 80</div>	 <div>314 851</div> <div>UV 80</div>	 <div>314 071</div> <div>UV 80</div>
 <div>314 080</div> <div>UV 80</div>	 <div>314 070</div> <div>UV 80</div>	 <div>314 020</div> <div>UV 80</div>
 <div>314 038</div> <div>UV 80</div>	 <div>314 921</div> <div>UV 80</div>	 <div>314 919</div> <div>UV 80</div>
 <div>314 083</div> <div>UV 80</div>	 <div>314 072</div> <div>UV 80</div>	 <div>314 403</div> <div>UV 80</div>
 <div>314 085</div> <div>UV 80</div>	 <div>314 917</div> <div>UV 80</div>	 <div>314 819</div> <div>UV 80</div>
 <div>314 396</div> <div>UV 80</div>	 <div>314 624</div> <div>UV 80</div>	 <div>314 398</div> <div>UV 80</div>
 <div>314 060</div> <div>UV 80</div>	 <div>314 362</div> <div>UV 80</div>	 <div>314 004</div> <div>UV 80</div>
 <div>314 062</div> <div>UV 80</div>	 <div>314 061</div> <div>UV 80</div>	 <div>314050</div> <div>UV 80</div>

Also available in All Weather 308



Price category



SOLIDS

 <div>314 001</div> <div>UV 80</div>	 <div>314 347</div> <div>UV 80</div>	 <div>314 022</div> <div>UV 80</div>
 <div>314 397</div> <div>UV 80</div>	 <div>314 007</div> <div>UV 80</div>	 <div>314 002</div> <div>UV 80</div>
 <div>314 005</div> <div>UV 80</div>	 <div>314 014</div> <div>UV 80</div>	 <div>314 610</div> <div>UV 80</div>
 <div>314 034</div> <div>UV 80</div>	 <div>314 032</div> <div>UV 80</div>	 <div>314 003</div> <div>UV 80</div>
 <div>314 031</div> <div>UV 80</div>	 <div>314 045</div> <div>UV 80</div>	 <div>314 395</div> <div>UV 80</div>
 <div>314 583</div> <div>UV 60</div>	 <div>314 947</div> <div>UV 60</div>	 <div>314 724</div> <div>UV 60</div>

DISCOVER
THE FASCINATING AND
MANIFOLD
WORLD OF SATTLER.



DISCOVER THE OPTIMUM QUALITY
FOR YOUR PROJECTS AND DESIGNS
IN OUR PROJECTS COLLECTION.

Be it fire safety standards or special wheather re-
sistance values. Withoud doubt, you will find in this
collection the right fabric for the requirements of your
PROJECTS in the public domain.

SPECIAL SOLUTIONS
FOR PROJECTS AND
SPECIAL REQUIRMENTS –
PROJECTS COLLECTION.

**COLLECTION
PROJECTS**

**ELEMENTS
ALL WEATHER**



ELEMENTS ALL WEATHER
SPECIAL REQUIREMENTS NEED
SPECIAL AWNING FABRICS.

No matter what your plans are. All Weather shields
you effectively from sun and rain with is special coat-
ing. Make the best of your leisure time! Regardless of
the weather.

**COLLECTION
PROJECTS**

**PERGOLA
OPAQUE**



PERFECT QUALITY
FOR DIVERSE
APPLICATIONS.

Be it Pergola, basket awnings or awnings, the doub-
le-sided coating on this fabric is not only highly fun-
gus and dirt repellent but is also available in delicate
matching colors and embossing either on one or on
both sides.

INDIVIDUAL SOLUTIONS FOR SPECIFIC ENQUIRIES.



COLLECTION PROJECTS

REFLECT



FOR A SHINING APPEARANCE.

Modern color combinations coated with glitter particles create special reflectance values for a sustainable energy efficiency in your sun protection projects.

COLLECTION PROJECTS

REFLECT AIR



SUN PROTECTION WITH TRANSPARENCY.

Be it for pergola, for lateral elements of conservatory awnings or used in horizontal constructions – REFLECT AIR does not only stand out with its beautiful colors and shiny surface: REFLECT AIR opens your view to the outside.

COLLECTION PROJECTS

FIREMASTER



FIRE RETARDANT – EVERYWHERE, WHERE REQUIRED.

FIREMASTER is particularly suitable for applications where stringent fire safety standards must be fulfilled, without having to renounce to modern colors or delicate textures.

COLLECTION PROJECTS

SUNPRINT



PRINTALBE AWNINGS FOR AN INDIVIDUAL DESIGN.

This material is not only suitable for commercial purposes, but also for creative solutions in the private sector. You can design your very own creation for digital printing. You will ensure the WOW effect and will be the ultimate eye-catcher.

Available upon request.



COLLECTION
NAUTEX

FABRICS FOR
BOAT COVERS



THE BEST QUALITY
FOR YOUR BOAT.



Not only premium acrylic fabrics, but also PVC qualities form part of this collection. You will find the right material for every application around and on your boat and beyond that, in attractive colors and structures.

Available upon request.

COLLECTION
TWILIGHT

PRIVACY, GLARE AND
SUN PROTECTION



THE SUN PROTECTION
OF YOUR CHOICE, WITH
TRANSPARENCY AND
HEAT PROTECTION.



The ideal solution for your requirements in terms of modern privacy, glare and sun protection. Create your own personal daylight mood with the new qualities of the Twilight collection by Sattler.

THE
WORLD OF
SATTLER.



