

PERGOLA OPAQUE




PERGOLA
OPAQUE

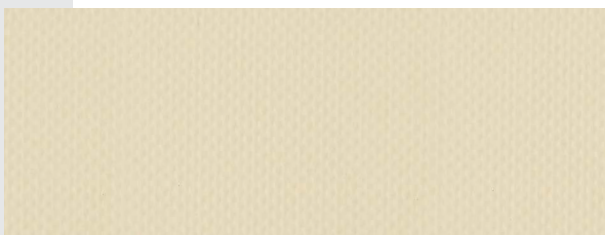
716 PERGOLA OPAQUE



716 1W4



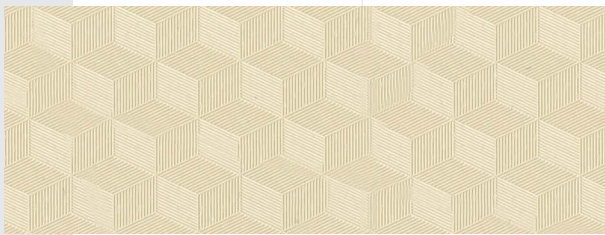
250 cm | ↔ |



716 2W0



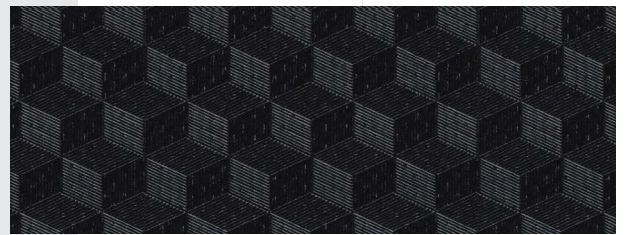
250 cm | ↔ |



716 8W7



250 cm | ↔ |



SPECIAL FEATURES



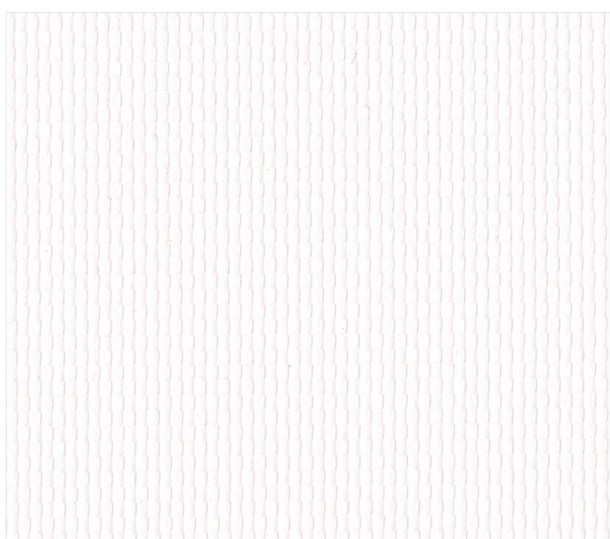
Wasser- und schmutzabweisend / Water and dirt repellent /
Hydrofuge et anti-salissures / Water- en vuilafstotend /
Idrorepellente e antisporco



Schwer entflammbar / Flame-retardant / Difficilement
inflammable / Moeilijk ontvlambaar / Dificilmente inflamabile



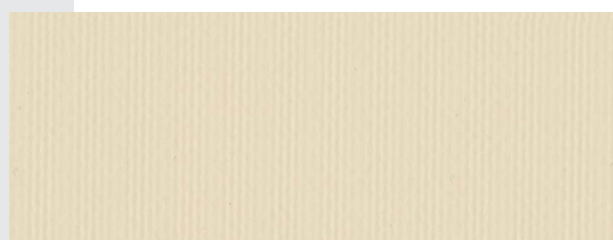
Wasserfest / Water resistant / Résistant à l'eau /
Waterafstotend / Resistente all'acqua



716 1P4



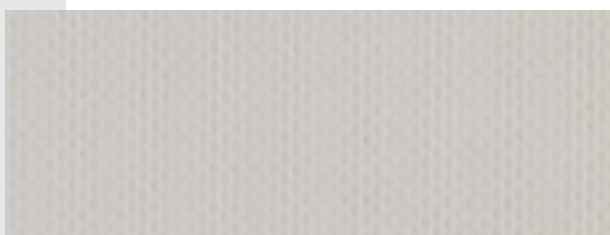
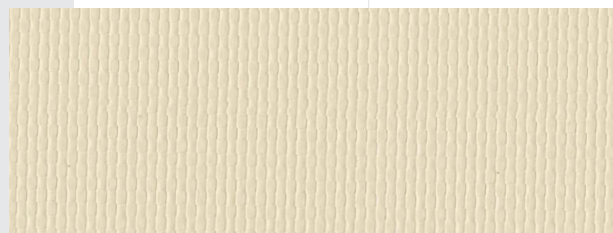
250 cm | ↔ |



716 2P0



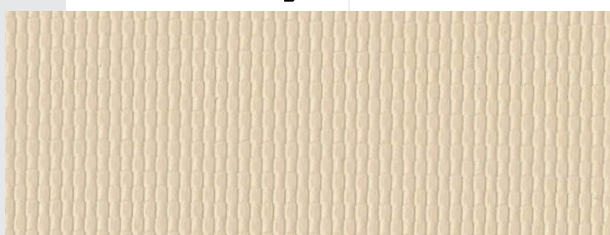
250 cm | ↔ |



716 8P2



250 cm | ↔ |



716 8P7



250 cm | ↔ |

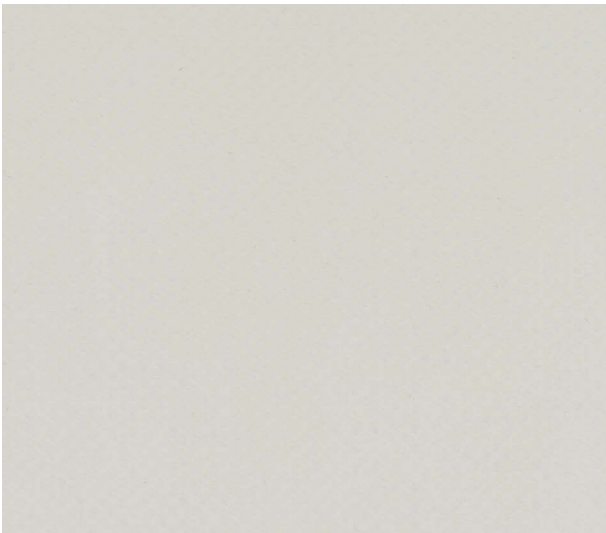
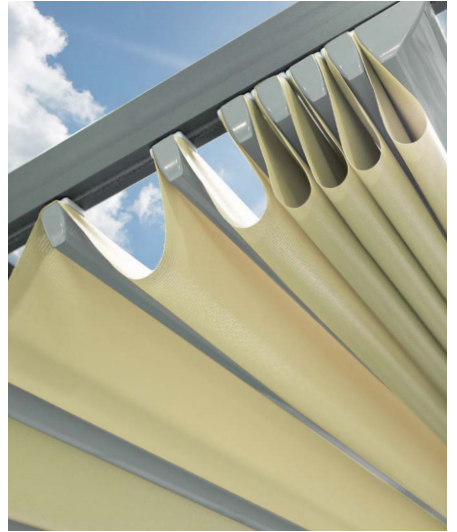


Keine Durchsicht / Blockout / Fonction d'obscurcissement /
Blokieren / Funzione oscurante



Lichtbeständig / Fade resistant / Résistant à la décoloration /
Bestand tegen vervagen / Resistente allo sbiadimento

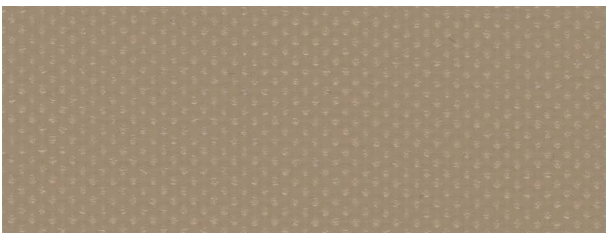
↙ Oberseite / Upper side / Côté supérieur / Bovenzijde / Lato superiore
↘ Unterseite / Lower side / Côté inférieur / Onderzijde / Lato inferiore



716 833

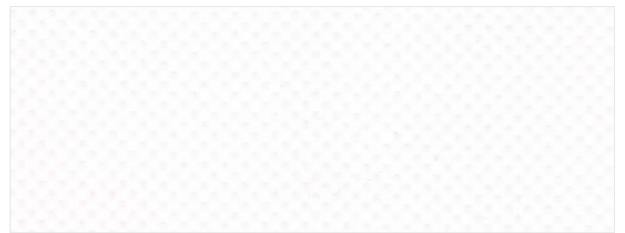


250 cm | ↔ |



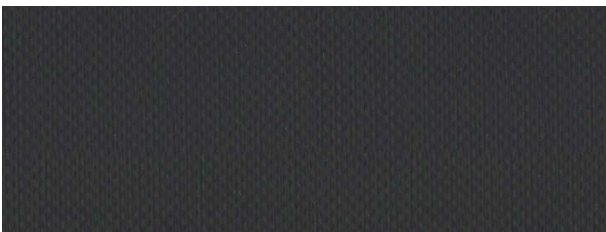
716 739

250 cm | ↔ |



716 114

250/300 cm | ↔ |



716 877

250/300 cm | ↔ |





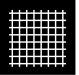












716 260

250/300 cm | ↔ |



FACTS

716 PERGOLA OPAQUE

Anwendungen / Applications / Applications / Toepassingen / Applicazione		 
	100 % PET	DIN 60 001
	L 1 / 1	DIN ISO 9354
	250/300 cm	
	60 m	
	760 g / m ²	DIN EN ISO 2286-2
	2600 N / 5 cm	DIN EN ISO 1421
	2600 N / 5 cm	DIN EN ISO 1421
	- 30°C	DIN EN 1876-1
	+ 70°C	IVK / Pkt. 5
	min. 7	DIN EN ISO 105-B02
	B-s2, d0 ✓ ✓ ✓ ✓	EU-EN 13501-1 CA-CAN/ULC-S109 USA-NFPA 701 USA-CSFM Title 19 USA-CPAI 84
	100 N / 5 cm	DIN EN ISO 2411
	beidseitig PVC matt, Unterseite mancher Artikel geprägt / PVC mat on both sides, Embossed underside of some articles / PVC mat des deux faces, Dessous en relief de certains articles / PVC-mat aan beide zijden, Onderkant van sommige artikelen in reliëf / PVC opaco su entrambi i lati, Parte inferiore in rilievo di alcuni articoli	



REINIGUNG & PFLEGE
Cleaning & Care
Nettoyage & Entretien
Reiniging & Verzorging
Pulizia & Cura



ZEICHENERKLÄRUNG
Explanation of symbols
Explication des symboles
Verklaring van symbolen
Spiegazione dei simboli

Hinweis: Änderungen die dem technischen Fortschritt dienen, behalten wir uns vor. Werte ohne Toleranzangaben sind Nennwerte mit einer Toleranz von ±5%. Die Angaben entsprechen unserem heutigen Kenntnisstand und sollen ohne Rechtsverbindlichkeit informieren. • Note: Subject to change in view of technical upgrades. Values indicated without tolerance levels are nominal values with a tolerance range of ±5%. All data presented here is given to the best of our current knowledge for guidance purposes and is not legally binding. • Remarque: Sous réserve de toute modification dans le cadre d'améliorations techniques. Les valeurs mentionnées sans tolérance sont des valeurs nominales avec une tolérance de ±5%. Les indications correspondent à notre savoir actuel et sont données à titre informatif sans obligation juridique. • Opmerking: wijzigingen voorbehouden in verband met technische upgrades. Waarden aangegeven zonder tolerantieniveaus zijn nominale waarden met een tolerantiebereik van ±5%. Alle gegevens die hier worden gepresenteerd, zijn naar ons beste huidige kennis gegeven voor begeleidingsdoeleinden en zijn niet juridisch bindend. • Avvertenza: Il produttore si riserva di apportare modifiche per il miglioramento tecnico del prodotto. I valori privi di tolleranza sono da intendersi come valori nominali con una tolleranza di ±5%. Tutti i dati corrispondono allo stato attuale delle nostre conoscenze; le informazioni fornite non sono legalmente vincolanti.

