



LUMERA ALL WEATHER





DE

Ein hauchdünnes Finish mit der intelligenten Beschichtung **IPC** macht **LUMERA ALL WEATHER** wasserdicht - die Geschmeidigkeit des Gewebes bleibt dennoch erhalten.



EN

A wafer-thin finish with the intelligent **IPC** coating makes **LUMERA ALL WEATHER** waterproof - the suppleness of the fabric is still retained.



FR

Une finition ultra fine avec le revêtement **IPC** intelligent rend le **LUMERA ALL WEATHER** imperméable - la souplesse du tissu est toujours conservée.



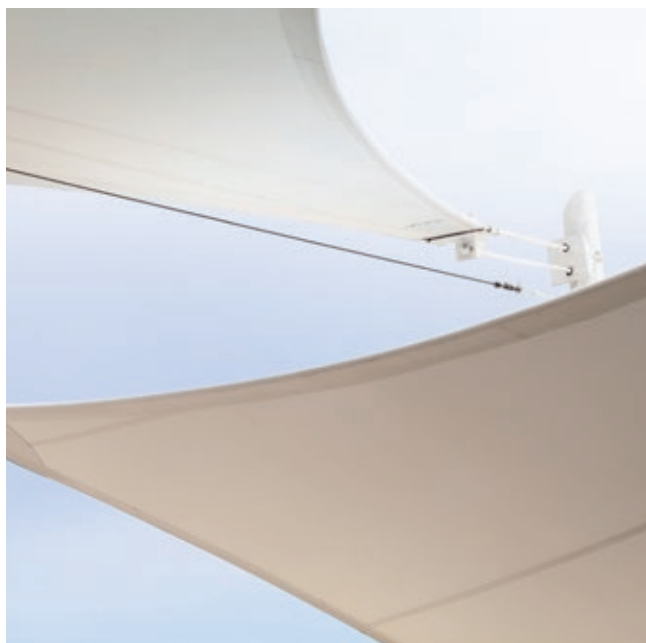
NL

Een flinterdunne afwerking met de intelligente **IPC**-coating maakt **LUMERA ALL WEATHER** waterdicht - de soepelheid van de stof blijft behouden.



IT

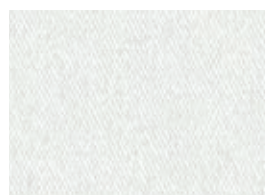
Una finitura ultra fine con il rivestimento **IPC** intelligente rende **LUMERA ALL WEATHER** impermeabile - la flessibilità del tessuto viene sempre mantenuta.



386 LUMERA ALL WEATHER



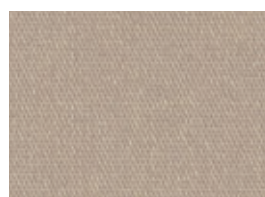
386 028 ACTINOLITE ↻



386 910 CRYSTAL



386 144 ALABASTER



386 020 DOLOMIT



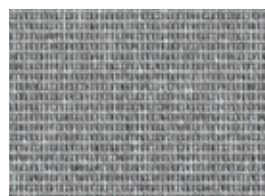
386 713 BRONZIT



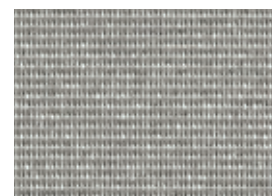
386 028 ACTINOLITE



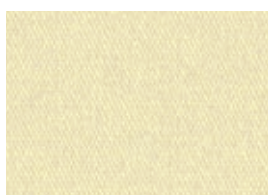
386 084 METEOR



386 081 ACANTHITE



386 813 GALENITE



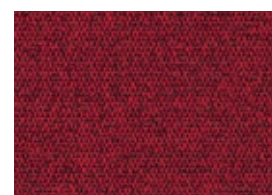
386 033 ARAGONIT



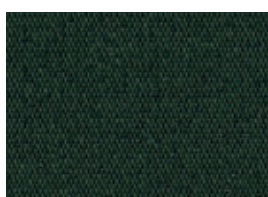
386 003 SULPHUR



386 001 RUBY



386 044 CINNABAR



386 068 SERPENTINE



386 362 EMERALD



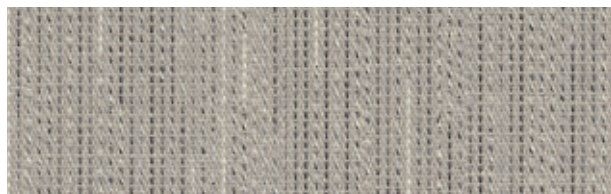
386 136 HEMATITE



386 086 MARIPOSIT



386 774 SILVERBIRCH



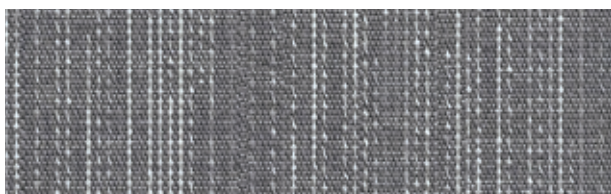
386 770 WILLOW



386 771 WALNUT



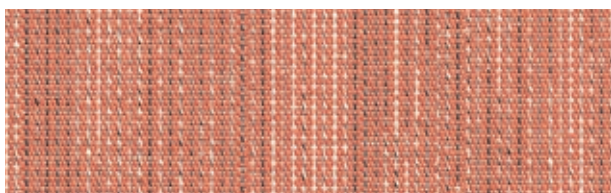
386 773 POPLAR



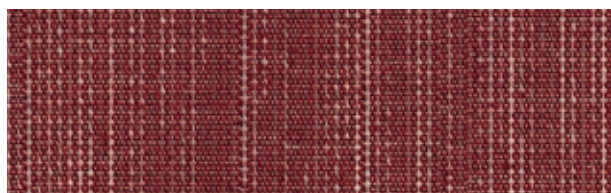
386 772 JUNIPER



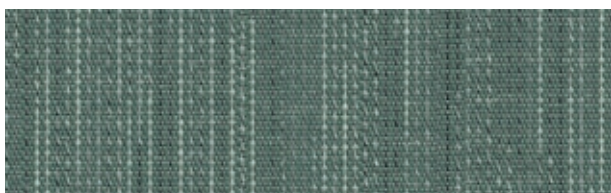
386 779 OAK



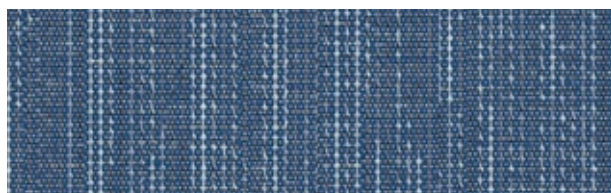
386 778 CHESTNUT



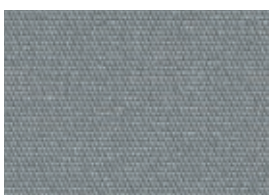
386 777 MAPLE



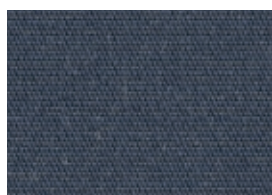
386 775 ROBINIA



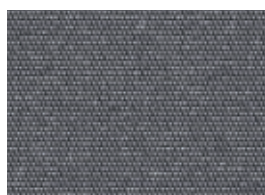
386 776 ELDER



386 062 JADEITE



386 055 GNEISS




386 398 SLATE



386 154 ONYX




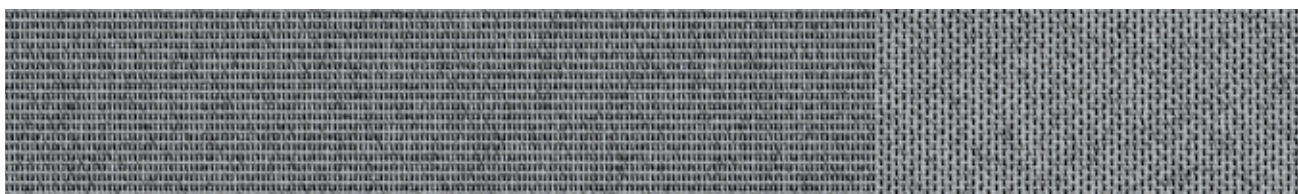
386 670 HAZE

24 cm 




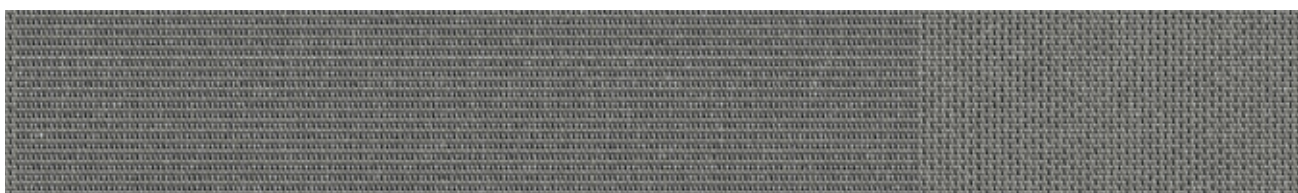
386 639 SAHARA

24 cm 



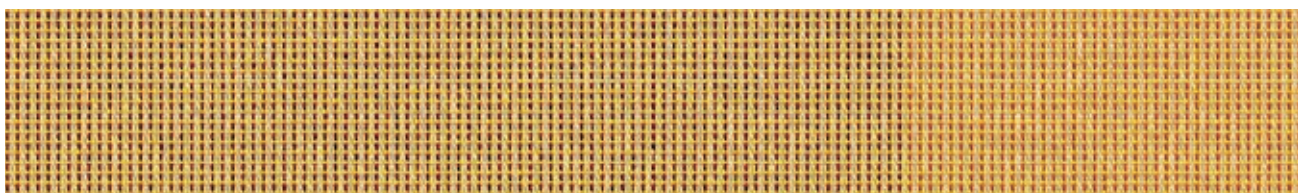
386 655 LADAKH

24 cm 



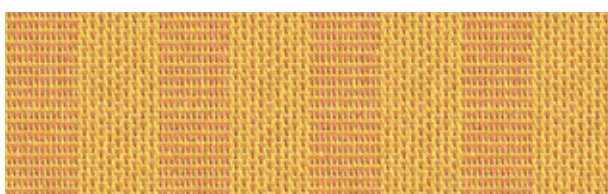
386 644 FJORD

24 cm 



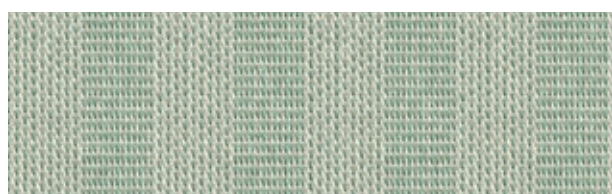
386 673 DAWN

24 cm 



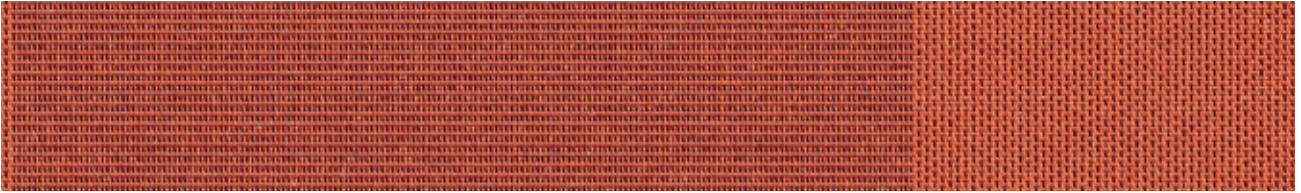
386 624 CORN

2 cm 



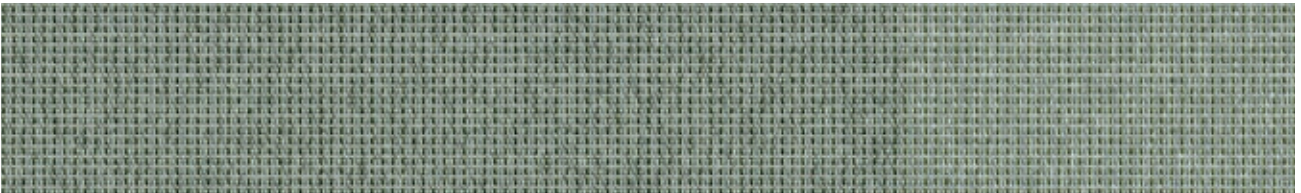
386 625 MOSS

2 cm 



386 658 GOBI

24 cm



386 674 VALLEY

24 cm



386 641 ARCTIC

24 cm



386 671 TERRAIN

24 cm



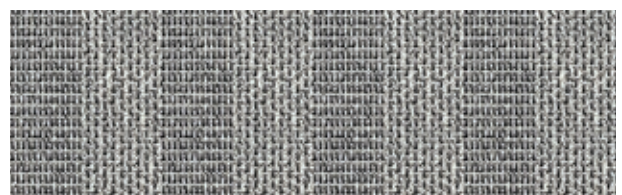
386 665 VULCANO

24 cm



386 620 SAND

2 cm



386 621 GRAVEL

2 cm

FACTS



386 LUMERA ALL WEATHER

Anwendungen / Applications / Applications / Toepassingen / Applicazione					
	100 % PAN sol. dyed	DIN 60 001			
	340 g/m ²	DIN EN 12127			
	Note: 100	EN ISO 4920			
	1000 mm	DIN EN ISO 811			
	L 1/1	DIN ISO 9354			
	150 daN / 5 cm	DIN EN ISO 13934-1			
	100 daN / 5 cm	DIN EN ISO 13934-1			
	● min. 7/8 * ● min. 4-5/5 *	DIN EN ISO 105-B04			
	120 cm				
	● min. 7/8 *	DIN EN ISO 105-B02			
	Konformitätserklärung / Declaration of conformity / Déclaration de conformité / Conformiteitsverklaring / Dichiarazione di conformità				
	EN 13561				
	IPC Finish	Beschichtet Seite bedruckbar / Coated side printable / Côté enduit imprimable / Gecoate zijde bedrukbaar / Lato patinato stampabile			

* weiß auf Anfrage / white on request / blanc sur demande / wit op aanvraag / bianco su richiesta

SPECIAL FEATURES

PVC FREE PVC frei / PVC-free / Sans PVC /
PVC-vrij / senza PVC



Lichtbeständig / Fade resistant /
Résistant à la décoloration / Bestand tegen vervagen /
Resistente allo sbiadimento



Wasser- und schmutzabweisend / Water and dirt
repellent / Hydrofuge et anti-salissures /
Water- en vuilafstotend / Idrorepellente e antisporco



Wasserfest / Water resistant /
Résistant à l'eau / Waterafstotend /
Resistente all'acqua

Hinweis: Änderungen die dem technischen Fortschritt dienen, behalten wir uns vor. Werte ohne Toleranzangaben sind Nennwerte mit einer Toleranz von ±5%. Die Angaben entsprechen unserem heutigen Kenntnisstand und sollen ohne Rechtsverbindlichkeit informieren. • Note: Subject to change in view of technical upgrades. Values indicated without tolerance levels are nominal values with a tolerance range of ±5%. All data presented here is given to the best of our current knowledge for guidance purposes and is not legally binding. • Remarque: Sous réserve de toute modification dans le cadre d'améliorations techniques. Les valeurs mentionnées sans tolérance sont des valeurs nominales avec une tolérance de ±5%. Les indications correspondent à notre savoir actuel et sont données à titre informatif sans obligation juridique. • Opmerking: wijzigingen voorbehouden in verband met technische upgrades. Waarden aangegeven zonder tolerantieniveaus zijn nominale waarden met een tolerantiebereik van ±5%. Alle gegevens die hier worden gepresenteerd, zijn naar ons beste huidige kennis gegeven voor begeleidingsdoeleinden en zijn niet juridisch bindend. • Avvertenza: Il produttore si riserva di apportare modifiche per il miglioramento tecnico del prodotto. I valori privi di tolleranza sono da intendersi come valori nominali con una tolleranza di ±5%. Tutti i dati corrispondono allo stato attuale delle nostre conoscenze; le informazioni fornite non sono legalmente vincolanti.



REINIGUNG & PFLEGE
Cleaning & Care
Nettoyage & Entretien
Reinigung & Verzorging
Pulizia & Cura



ZEICHENERKLÄRUNG
Explanation of symbols
Explication des symboles
Verklaring van symbolen
Spiegazione dei simboli

